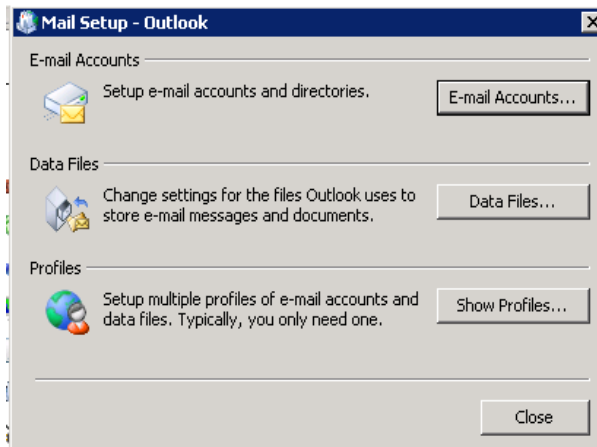


The configuration of Outlook 2003

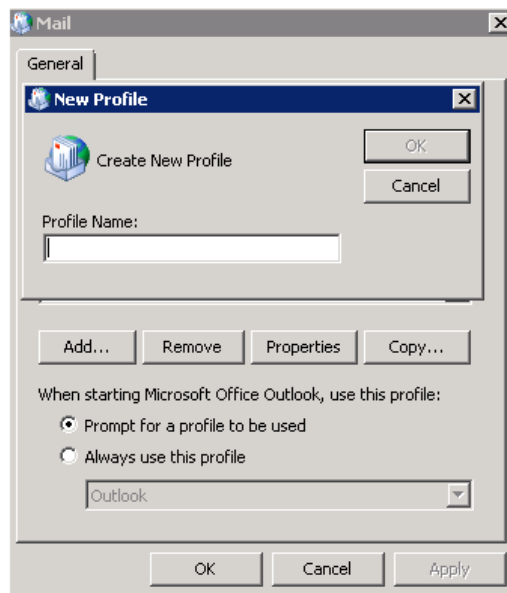
The configuration of the mail accounts is available in “Mail” menu, which is placed in “Control panels”. For configuration of the mail accounts in Windows XP follow these steps (in other OS can be the path slightly different):

Start -> Settings->Control Panel -> Mail

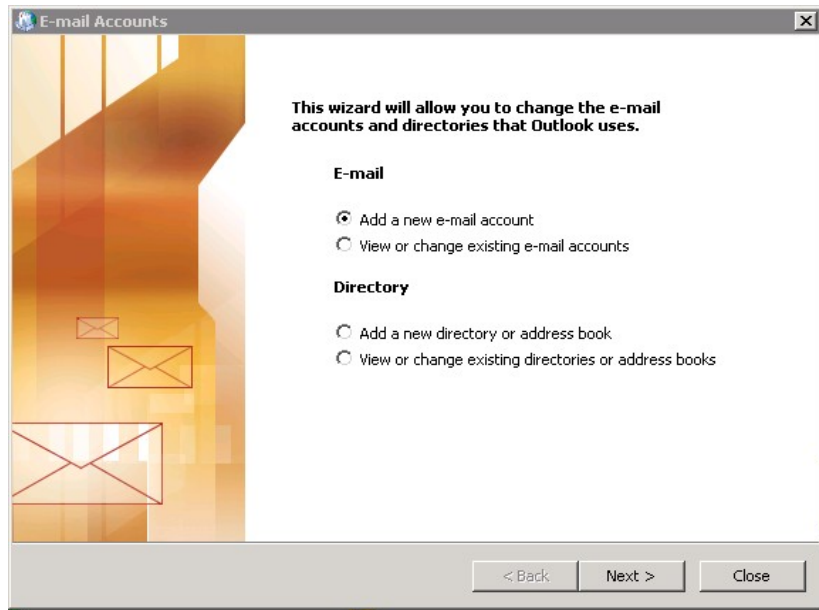
1. Choose “Show Profiles”.



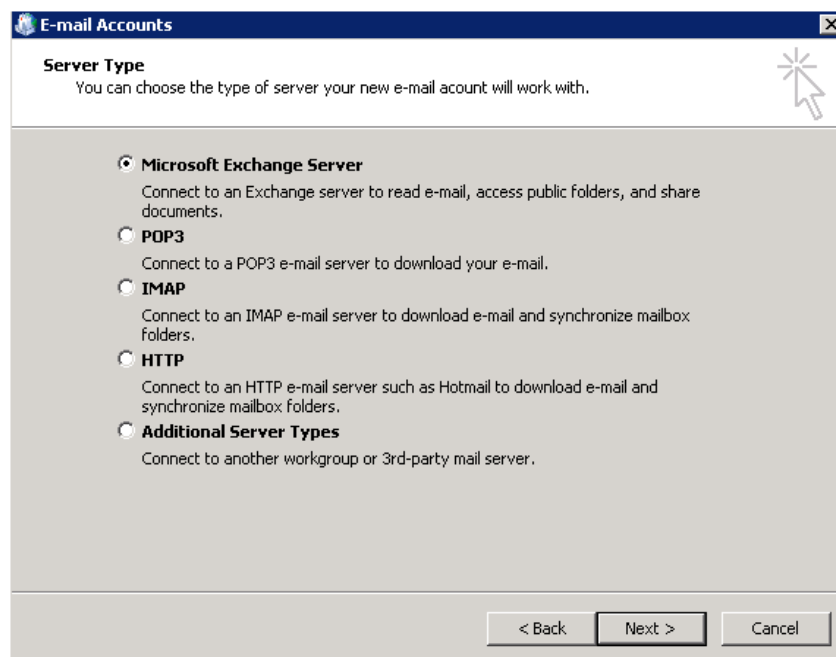
2. Choose “Add...” and insert the profile name.



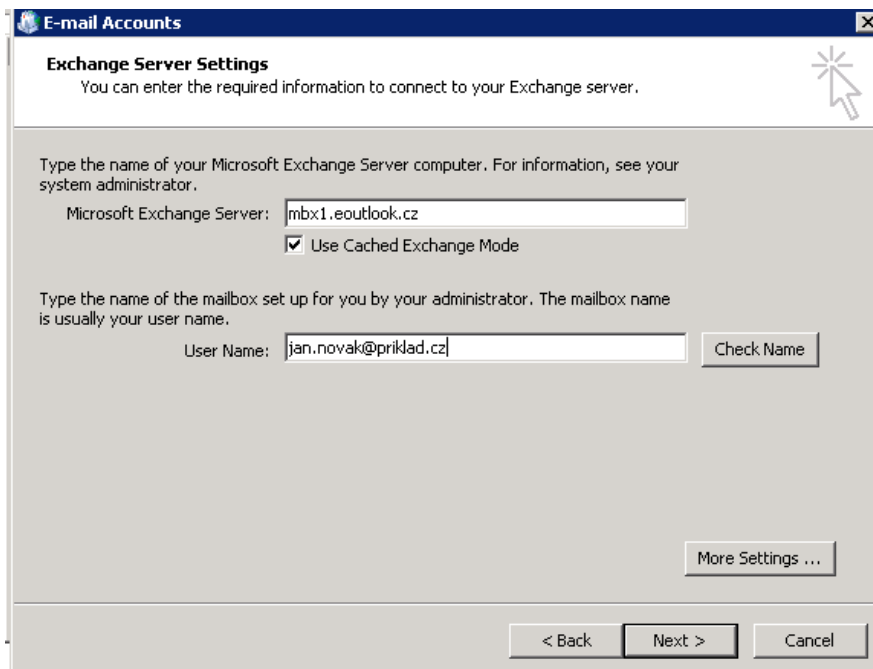
3. Choose “Add a new e-mail account”.



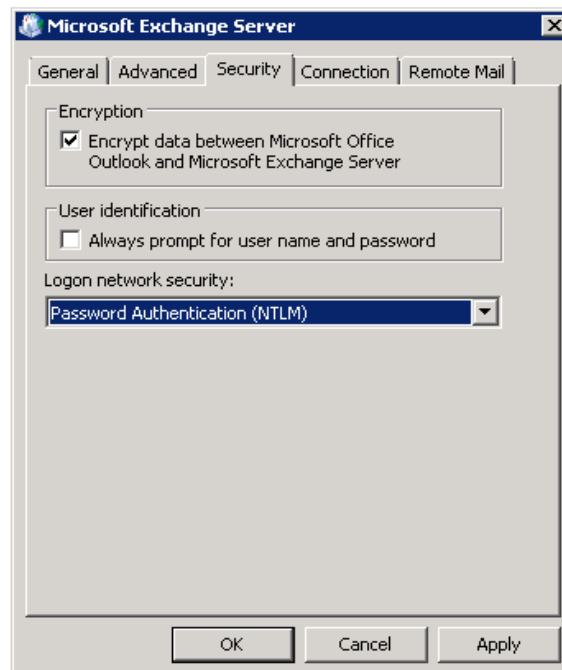
4. Choose “Microsoft Exchange server”.



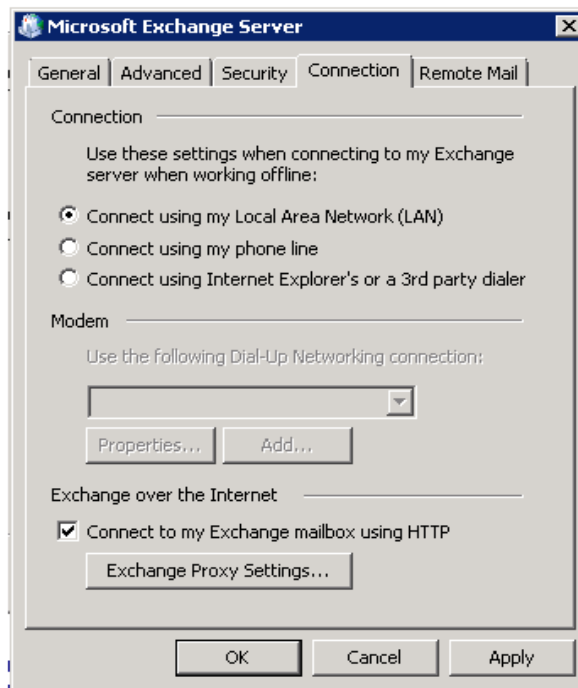
5. Fill the field "Microsoft Exchange Server": 'mbx1.eoutlook.cz' and "User name" in format user.name@domain.xx (user name was sent to you in first activation e-mail). Then choose "More settings..." It could happen that other window as the window on the screenshot will be displayed. If so, close dialog window by using "Cancel" button and continue with the next point.



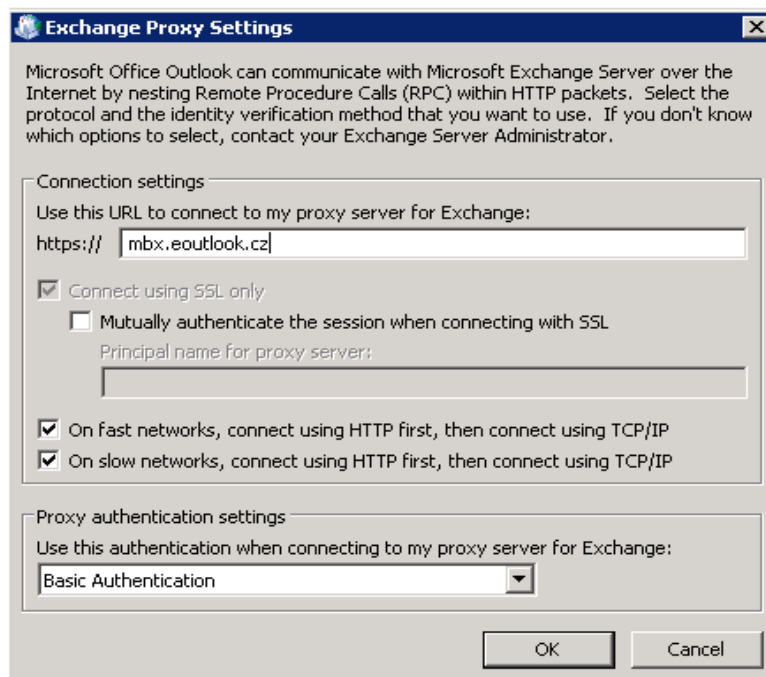
6. Window with tabs will appear. On tab "Security" tick "Encrypt data..." and in section "Logon network security" choose "Password authentication NTLM".



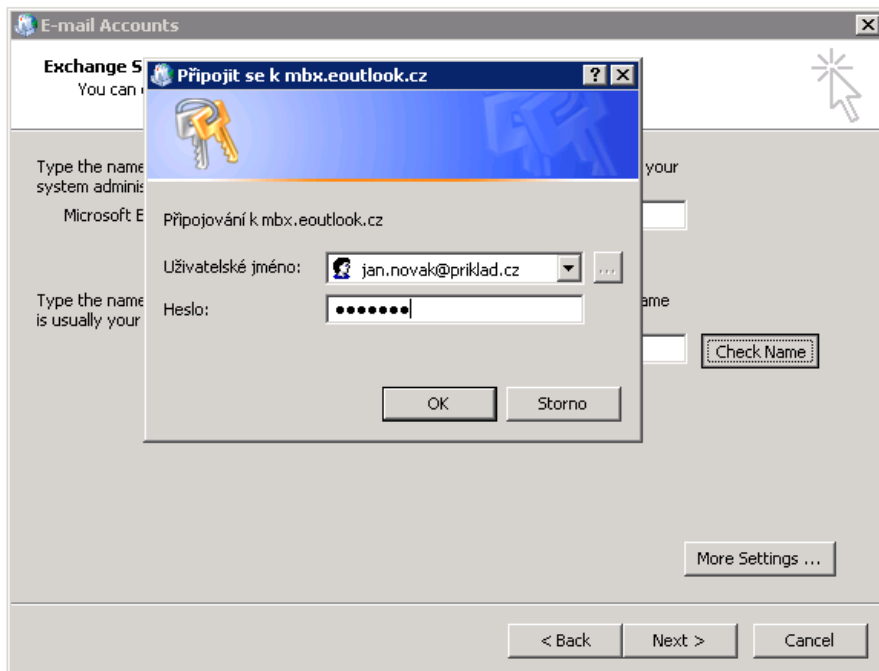
7. On tab “Connection” choose “Connect to my Exchange mailbox using HTTP”. Then you choose “Exchange Proxy Settings...”



8. In section “Connection settings“ complete “mbx.eoutlook.cz” and tick “On fast networks ...” and “On slow networks ...” In section “Proxy authentication settings” choose “Basic authentication”.



9. Choose “Check name”, dialog window will appear, complete “User name” for authentication and “Password”.



10. If the connection between Outlook and Exchange server will be successfully established, the user name will appear underlined. Choose “Next” and “Finish”. Your account have been successfully configured!

